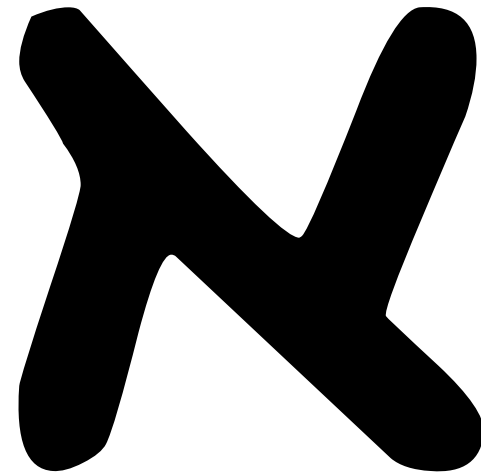
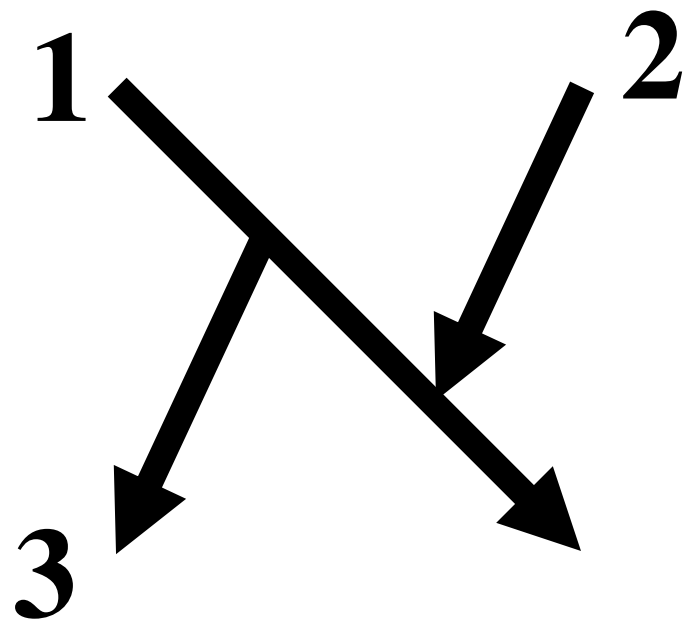
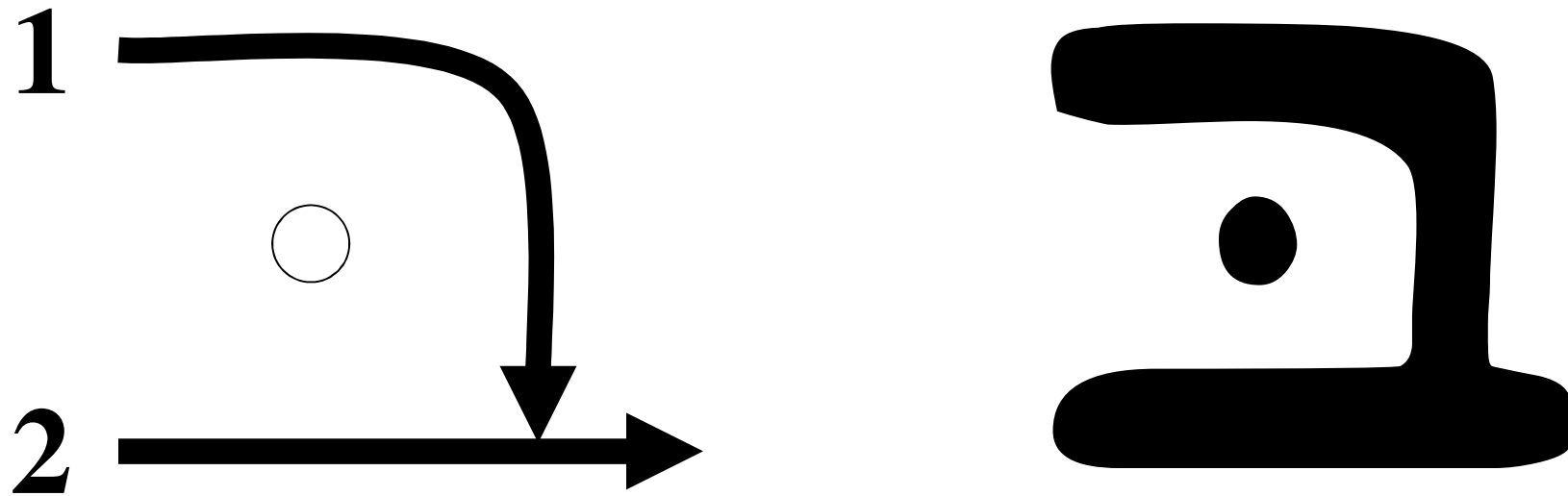


Alef א



Bet ב

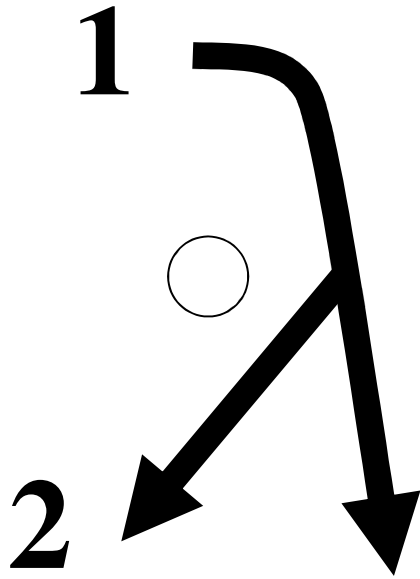
1-49
②



**Tail on bottom right
distinguishes
Bet ב from Kaf כ**

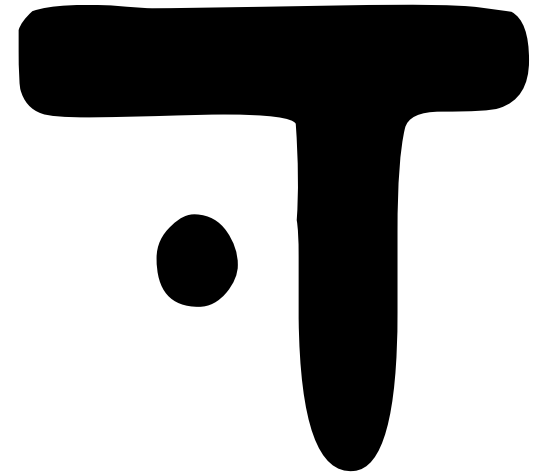
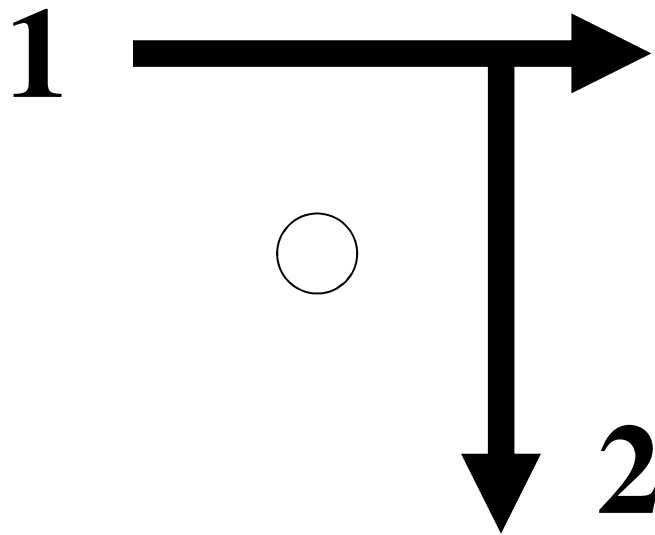
Gimel ג

1-50
②



Dalet ך

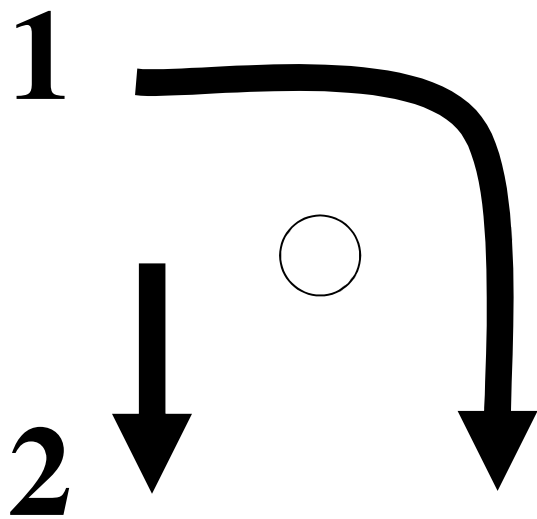
1-51
②



**Tail on top right
distinguishes
Dalet ך from Resh ך**

Hay ה

1-52
②



Gap in upper left
distinguishes
Hay ה from Het ה

Waw / Vav ו

1-53
①

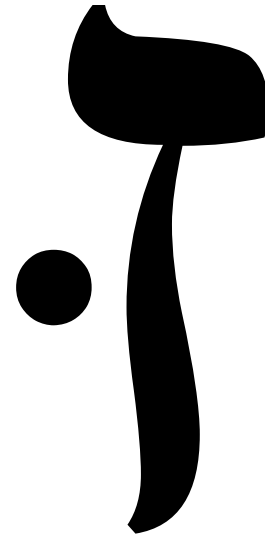
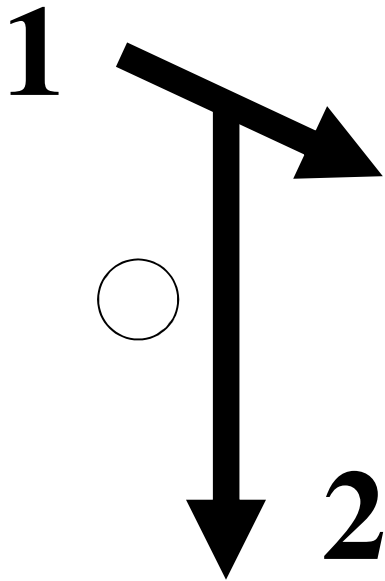
**Optional hook
in top left**



**Unlike Yod ך and Final Nun ן,
Vav ו comes just down to the line**

Zayin ז

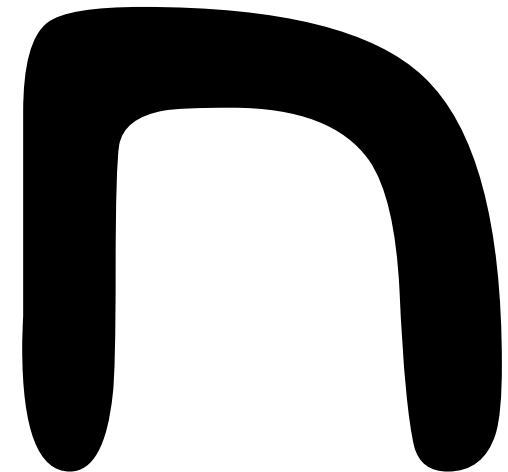
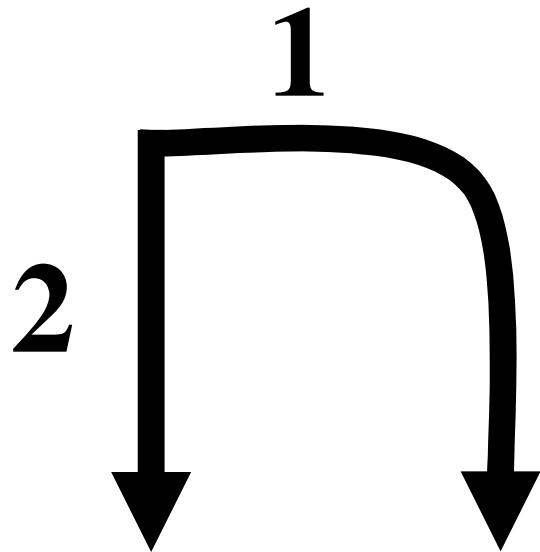
1-54
②



**Tail on top right
distinguishes Zayin ז
from Waw ו**

Ḥet ה

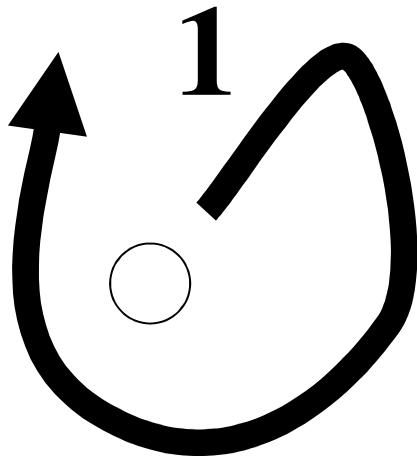
1-55
①



**Lack of Gap in upper left
distinguishes
Ḥet ה from Hay ה**

Tet ט

1-56
①



Yod ם

1-57
①

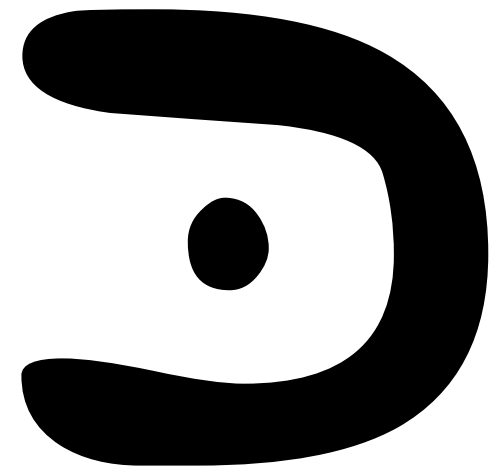
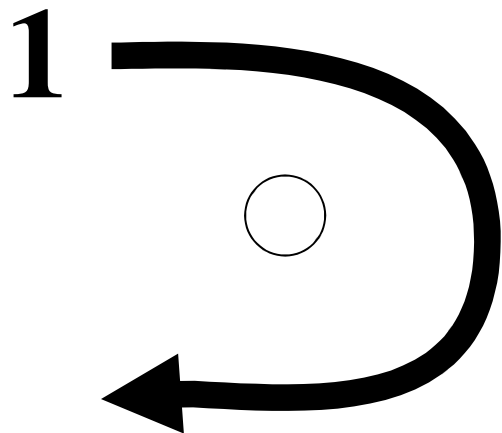
Some people
curve Yod



Unlike Vav ן and Final Nun ן,
Yod ם doesn't reach the bottom line.

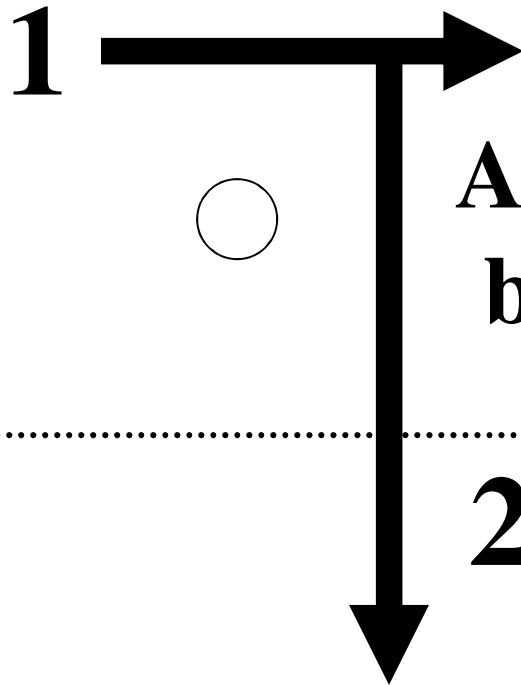
Kaf כ

1-58
①

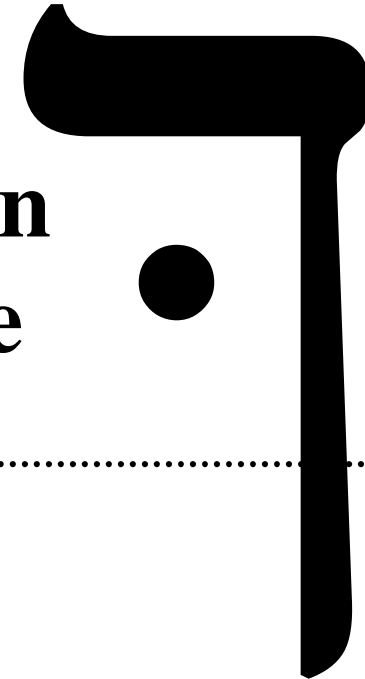


**Smooth bottom right
distinguishes
Kaf כ from Bet ב**

Final Kaf כ



Alternately, Kaf can
be all 1 curved line

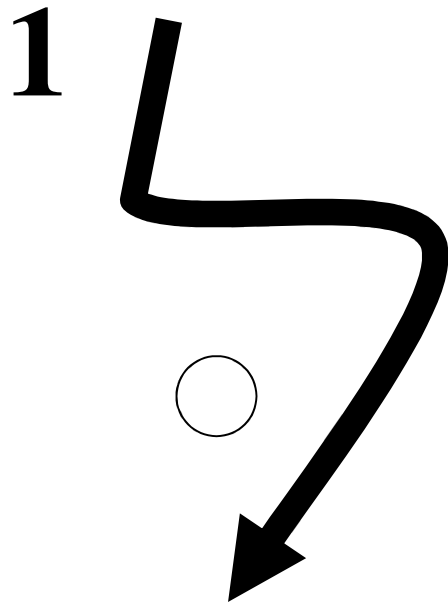


2
Unlike Dalet כ
and Resh כ,

Final Kaf כ goes below the line

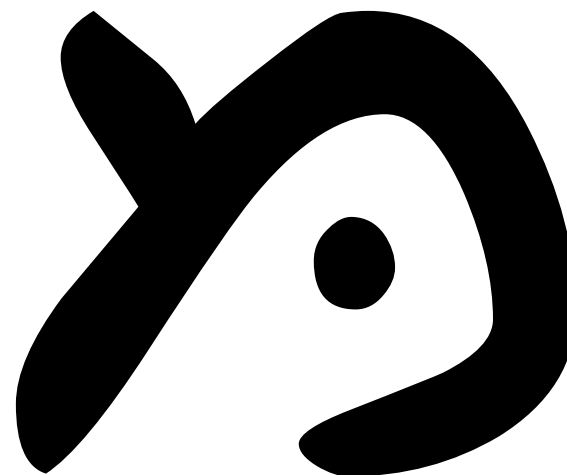
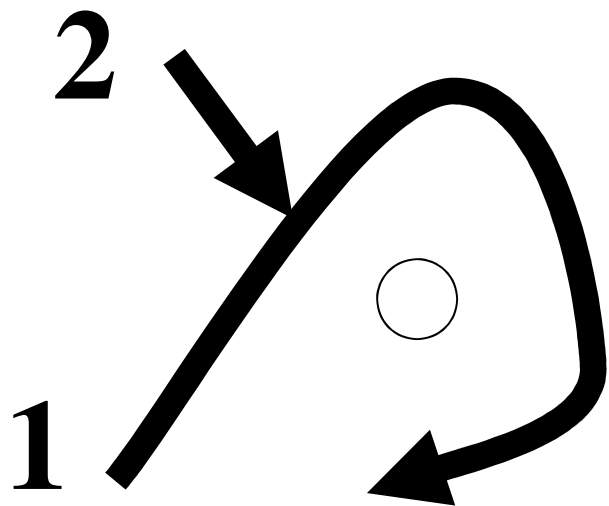
Lamed ל

1-60
①

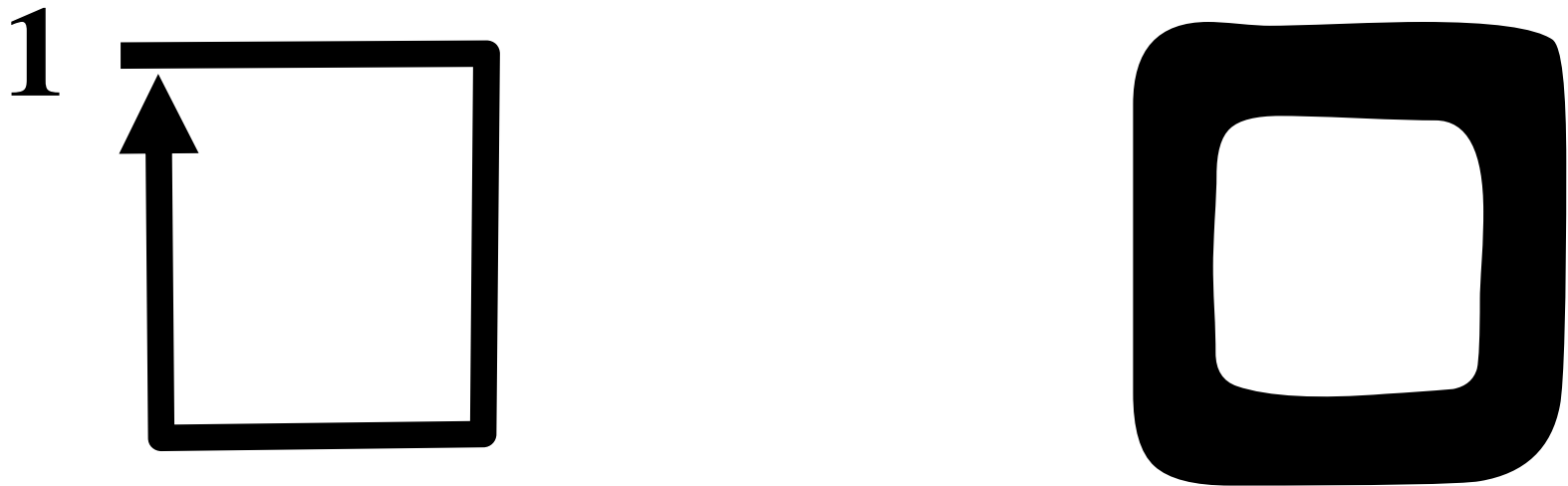


Mem מ

1-61
②



Final Mem ם

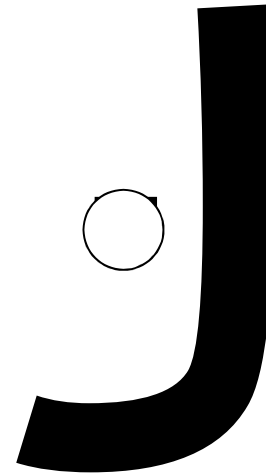
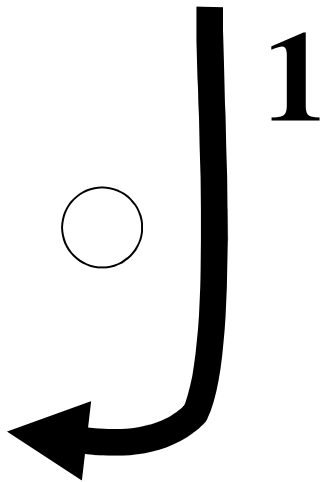


**Square bottom distinguishes
Final Mem ם from Samek ם**

Nun נ

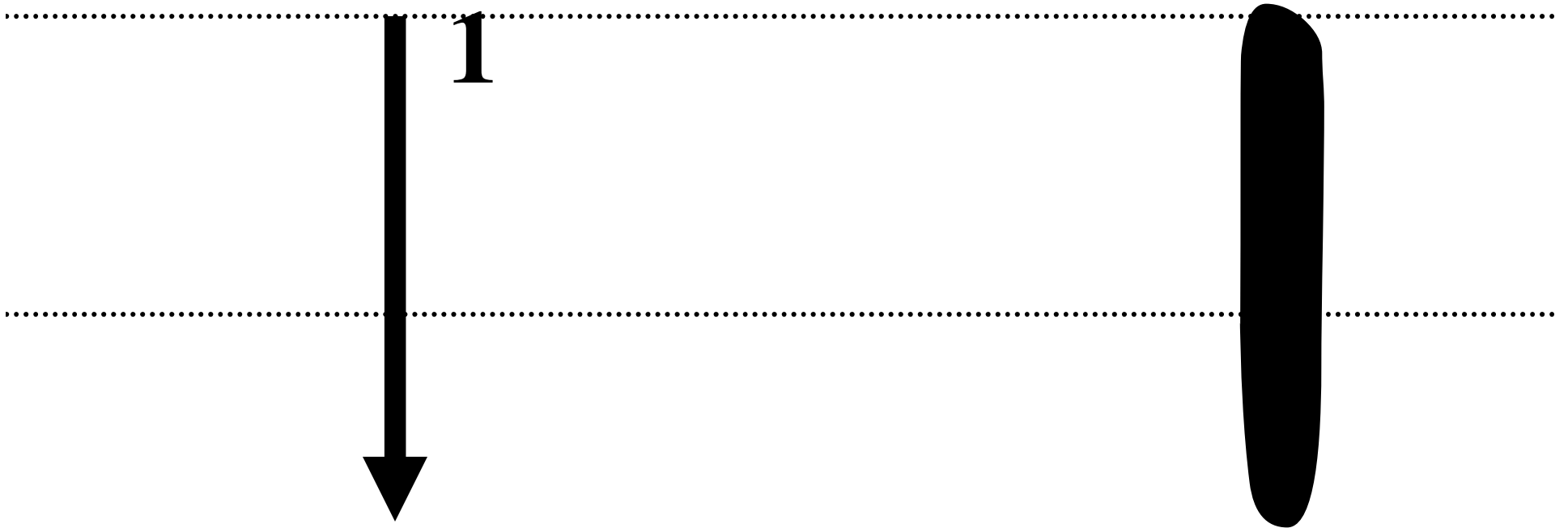
1-63
①

Some people
add a top hook



Final Nun ך

Optional hook
in top left

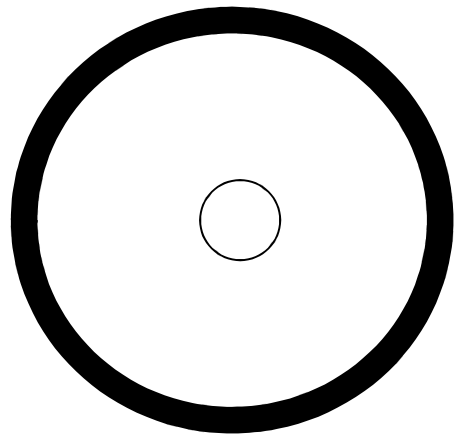


Unlike Yod ך and Vav ך,
Final Nun ך extends below the line

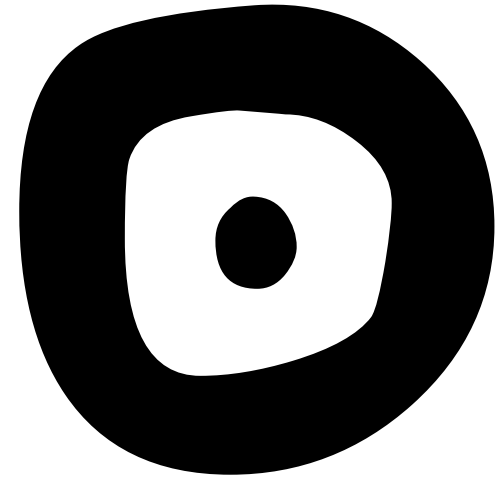
Samek ם

1-65
①

Optional hook
in top left



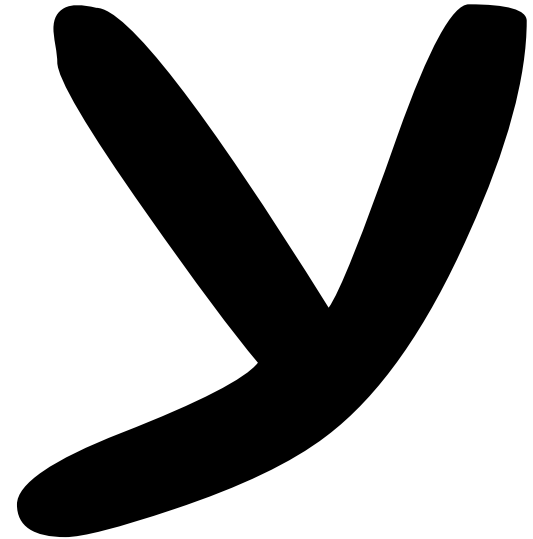
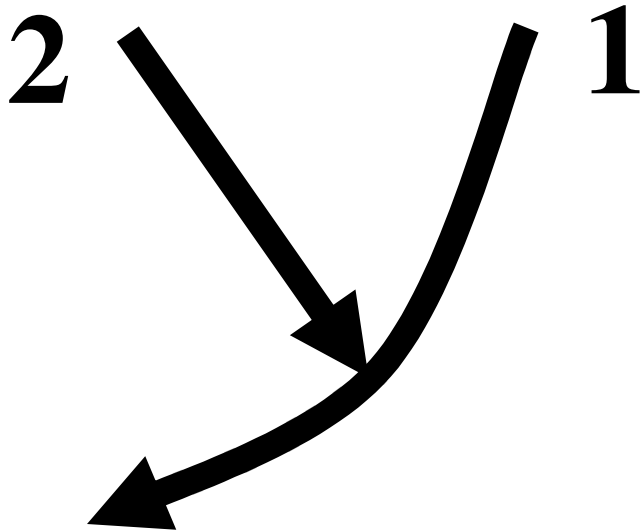
1



Round bottom distinguishes
Samek ם from Final Mem ם

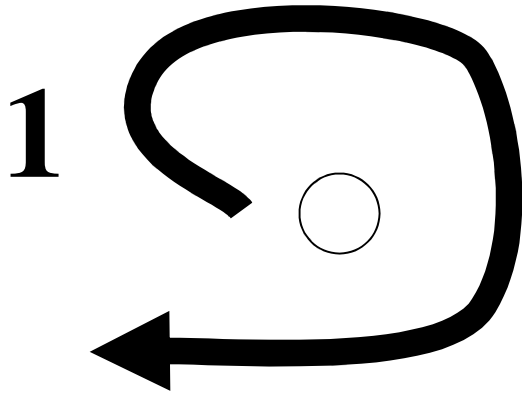
Ayin ע

1-66
①



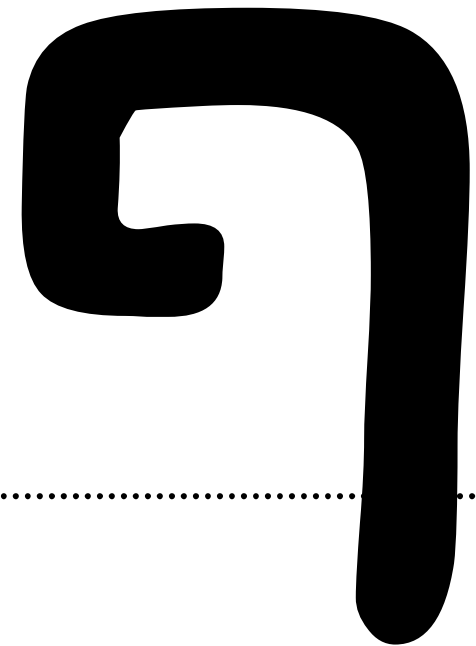
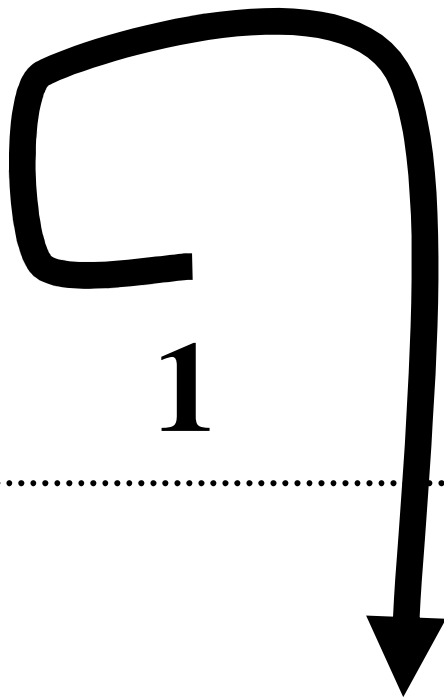
Pay פ

1-67
①



Final Pay ף

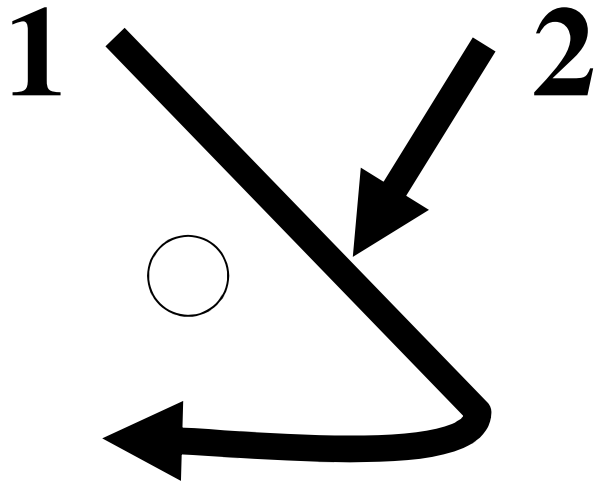
1-68



**Tail extends
below the line**

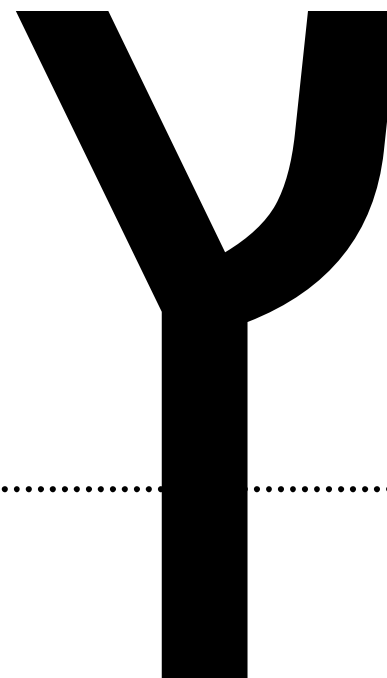
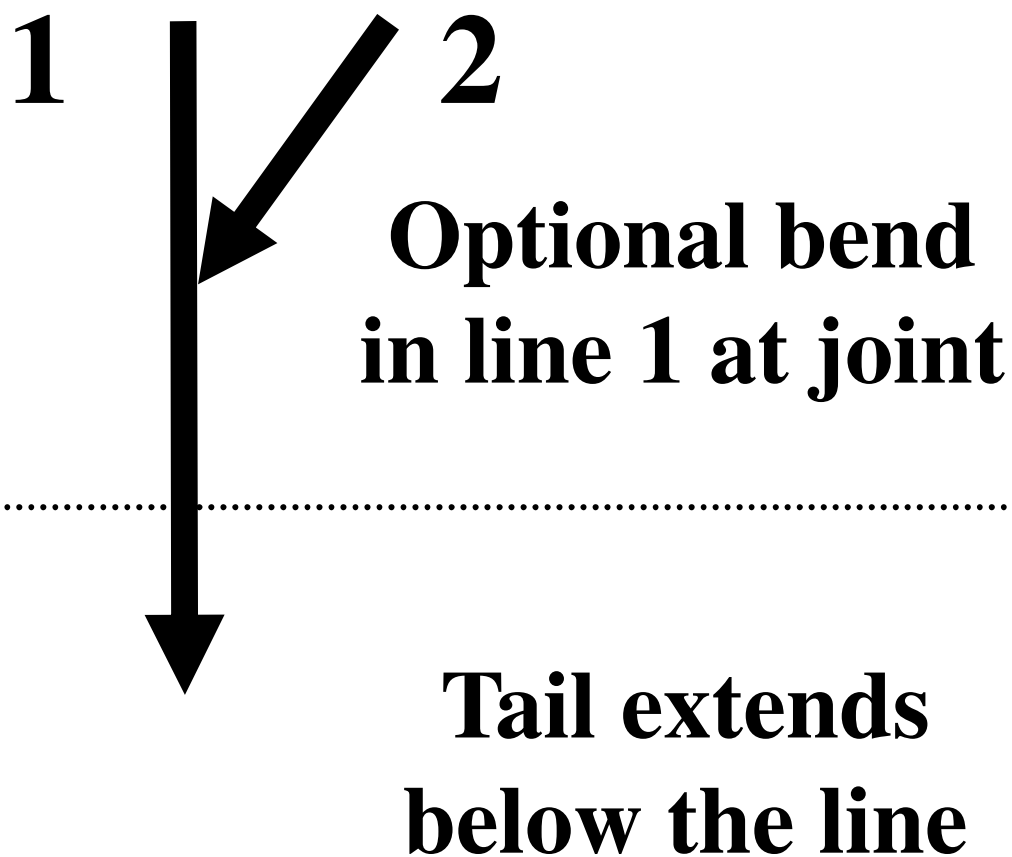
Tsade ז

1-69
②



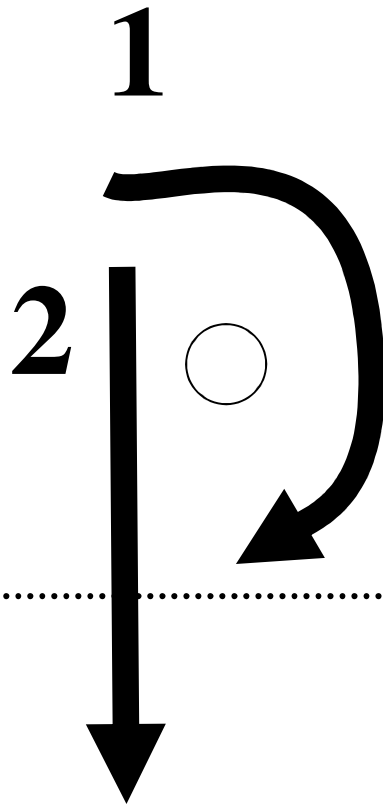
Final Tsade ף

1-70
①



Qof ק

1-71
②



**Tail extends
below the line**

Resh ר

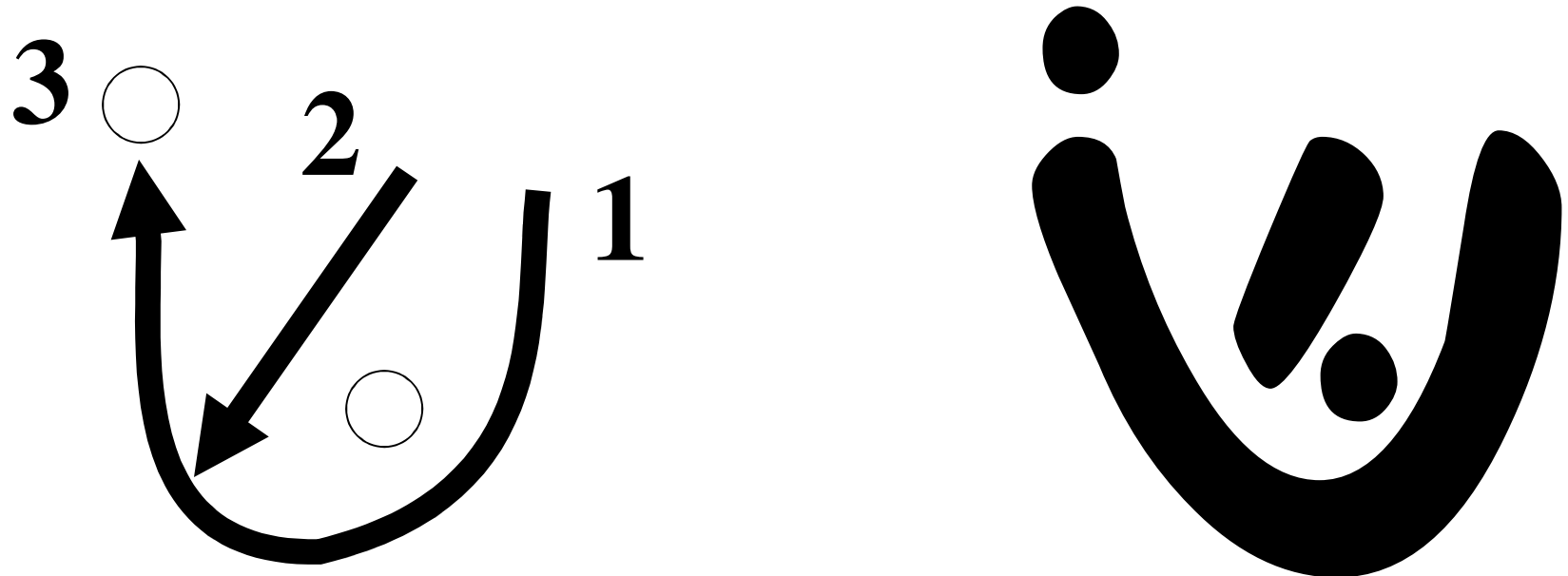
1-72



**Smooth top right corner
distinguishes
Resh ר from Dalet ד**

Sin שׁ

1-73
③



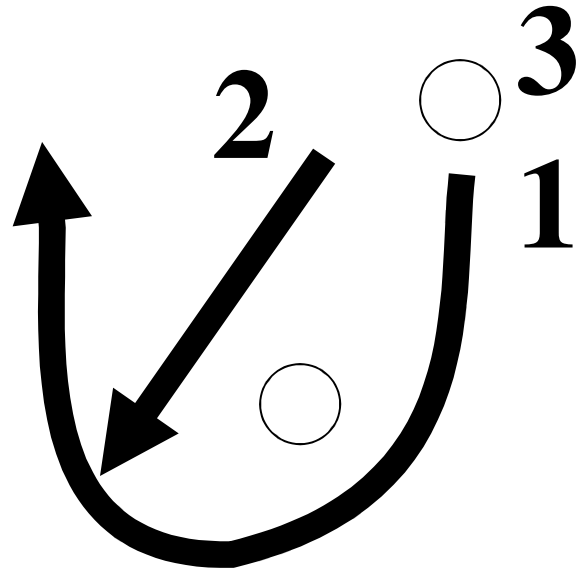
**Placement of upper dot
distinguishes
Sin שׁ from Shin שׂ**

Shin



1-74

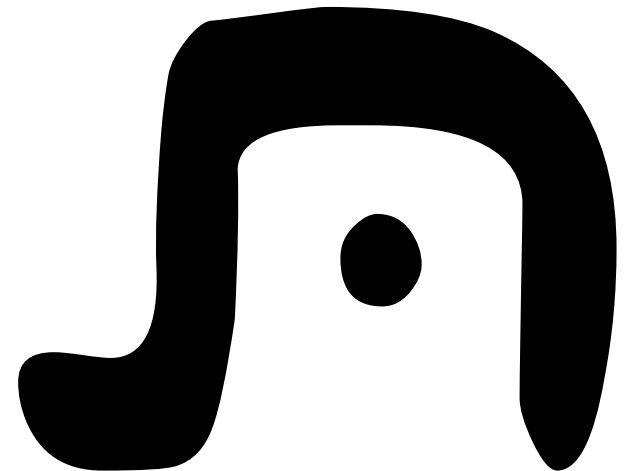
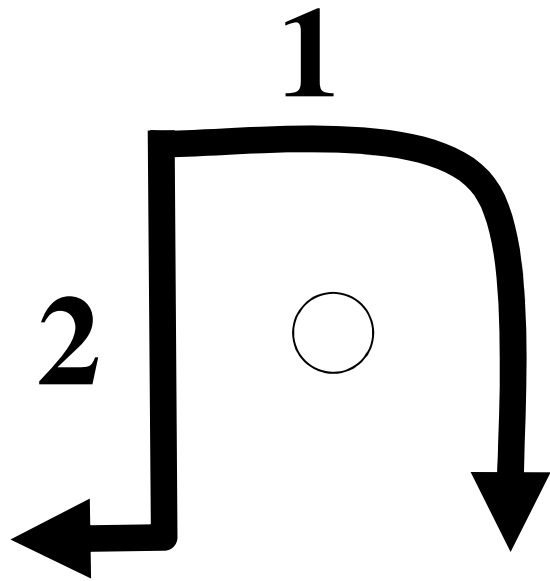
③



Placement of upper dot
distinguishes
Shin שׁ from Sin שׂ

Tav ת

1-75
②



**Tail in lower left
distinguishes
Tav ת from Het ה**